

T E C H N I C A L M A N U A L

**AVIATION UNIT AND
INTERMEDIATE MAINTENANCE
REPAIR PARTS AND SPECIAL TOOLS LIST
FOR
TOW BAR ASSEMBLY, AIRCRAFT
P/N AA1730-1251
NSN 1730-00-967-9556**

This copy is a reprint which includes current
pages from Change 1.

***This manual supersedes TM 55-1730-225-23P, 12 August 1980, including all changes.**

"Approved for public release; distribution is unlimited."

**HEADQUARTERS, DEPARTMENT OF THE ARMY
25 NOVEMBER 1986**

CHANGE }
NO. 1 }

HEADQUARTERS
DEPARTMENT OF THE ARMY
WASHINGTON, D.C., 11 October 1988

AVIATION UNIT AND INTERMEDIATE MAINTENANCE
REPAR PARTS AND SPECIAL TOOLS LIST

FOR

TOW BAR ASSEMBLY, AIRCRAFT
P/N AA1730-1251
NSN 1730-00-967-9556

TM 55-1730-225-23P, 25 November 1986, is changed as follows:

1. Remove and insert pages as indicated below. New or changed text material is indicated by a vertical bar in the margin. An illustration change is indicated by a miniature pointing hand.

Remove pages	Insert pages
i/ii	i/ii
9 and 10	9 and 10
11 thru 13	1-1/1-2 through I-3/I-4

2. Retain this sheet in front of manual for reference purposes.

By Order of the Secretary of the Army:

CARLE. VUONO
General, United States Army
Chief of Staff

Official:

R.L. DILWORTH
Brigadier General, United States Army
The Adjutant General

DISTRIBUTION:

To be distributed in accordance with DA Form 12-31, AVUM and AVIM requirements for all Fixed Wing and Rotary Wing Aircraft.

TECHNICAL MANUAL }
 No. 55-1730-225-23P }

HEADQUARTERS
 DEPARTMENT OF THE ARMY
 WASHINGTON, D.C., 25 November 1986

**AVIATION UNIT AND INTERMEDIATE MAINTENANCE
 REPAIR PARTS AND SPECIAL TOOLS LIST**

**FOR
 TOW BAR ASSEMBLY, AIRCRAFT
 P/N AA1730-1251
 NSN 1730-00-967-9556**

CURRENT AS OF 17 JUNE 1988

REPORTING ERRORS AND RECOMMENDING IMPROVEMENTS

You can help improve this manual. If you find any mistake or if you know of a way to improve the procedures, please let us know. Mail your letter, DA Form 2028 (Recommended Changes to Publications and Blank Forms), or DA Form 2028-2 located in the back of this manual direct to: Commander, U.S. Army Aviation Systems Command, ATTN: AMSAV-MMD, 4300 Goodfellow Boulevard, St. Louis, MO 63120-1798. A reply will be furnished directly to you.

Table of Contents

	Listing Page	Illus Figure
Section I. Introduction		
II. Repair Parts List		1
III. Special Tools List (Not Applicable)		
IV. NSN and Part No. Index		

REPAIR PARTS AND SPECIAL TOOLS LIST

SECTION I. INTRODUCTION

1. SCOPE

This RPSTL lists and authorizes spares and repair parts; special tools; special test, measurement, and diagnostic equipment (TMDE); and other special support equipment required for performance of Aviation Unit and Aviation Intermediate maintenance of the Towbar assembly. It authorizes the requisitioning, issue, and disposition of spares, repair parts and special tools as indicated by the source, maintenance and recoverability (SMR) codes.

2. General.

In addition to Section I, Introduction, this Repair Parts and Special Tools List is divided into the following sections:

a. Section II. Repair Parts List. A list of spares and repair parts authorized by this RPSTL for use in the performance of maintenance. The list also includes parts which must be removed for replacement of the authorized parts. Parts lists are composed of functional groups in ascending alphanumeric sequence, with the parts in each group listed in ascending figure and item number sequence. Bulk materials are listed in item name sequence. Repair parts kits are listed separately in their own functional group within Section II. Repair parts for repairable special tools are also listed in this section. Items listed are shown on the associated illustration(s)/figure(s).

b. Section III. Special Tools List. A list of special tools, special TMDE, and other special support equipment authorized by this RPSTL (as indicated by Basis of Issue (BOI) information in DESCRIPTION AND USABLE ON CODE column) for the performance of maintenance. (Not Applicable).

c. Section IV. National Stock Number and Part Number Index. A list, in National Item Identification Number (NIN) sequence, of all National stock numbered items appearing in the listing, followed by a list in alphanumeric sequence of all part numbers appearing in the listings. National stock numbers and part numbers are cross-referenced to each illustration figure and item number appearance.

3. Explanation of Columns (Sections II and III).

a. ITEM NO. (Column (1)). Indicates the number used to identify items called out in the illustration.

b. SMR CODE (Column (2)). The Source, Maintenance, and Recoverability (SMR) code is a 5-position code containing supply/requisitioning information, maintenance category authorization criteria, and disposition instruction, as shown in the following breakout:

Source Code	Maintenance Code	Recoverability Code
_____	_____	_____
<u>1st two</u> <u>positions</u>	<u>XX</u>	

How you get an item	3d position	4th position	Who determined disposition
	Who can install, replace or use the item	Who can do complete repair* on the item	action on an unserviceable item

*Complete Repair: Maintenance capacity, capability, and authority to perform all corrective maintenance tasks of the "Repair" function in a use/user environment in order to restore serviceability to a failed item.

(1) Source Code. The source code tells you how to get an item needed for maintenance, repair, or overhaul of an end item/equipment. Explanations of source codes follows:

Code	Explanation
PA	Stocked items; use the applicable NSN to request/requisition items these source codes. They are authorized to the category indicated by the code entered in the 3d position of the SMR code.
PB	
PC**	
PD >	
PE	
PF	
PG	**NOTE: Items coded PC are subject to deterioration.
KD	Items with these codes are not to be requested/requisitioned individually. They are part of a kit which is authorized to the maintenance category indicated in the 3d position of the SMR code. The complete kit must be requisitioned and applied.
KF >	
KB	

CODE

Explanation

MO-	(Made at org/ AVUM Level)	}	Items with these codes are not to be requested/requisitioned individually. They must be made from bulk material which is identified by the part number in the DESCRIPTION AND USABLE ON. CODE (UOC) column and listed in the Bulk Material group of the repair parts list in this RPSTL. If the item is authorized to you by the 3d position code of the SMR code, but the source code indicates it is made at a higher level, order the item from the higher level of maintenance.
MF-	(Made at DS/ AVUM Level)		
MH-	(Made at GS Level)		
ML-	(Made at Spe- cialized Repair Act (SRA))		
MD-	(Made at Depot)		

AO-	(Assembled by org/AVUM Level)	}	Items with these codes are not to be requested/requisitioned individually. The parts that make up these assembled item must be requisitioned or fabricated and assembled at the level of maintenance indicated by the source code. If the 3d position code of the SMR code authorizes you to replace the item, but the source code indicates the items is assembled at a higher level, order the item from the higher level of maintenance.
AF-	(Assembled by DS/AVIM Level)		
AH-	(Assembled by GS Category)		
AL-	(Assembled by SRA)		
AD-	(Assembled by Depot)		

XA - Do not requisition an "XA"-coded item. Order its next higher assembly. (Also, refer to the NOTE below.)

XB - If an "XB" item is not available from salvage, order it using the FSCM and part number given.

XC - Installation drawing, diagram, instruction sheet, field service drawing, that is identified by manufacturer's part number.

XD - Item is not stocked. Order an "XD"-coded item through normal supply channels using the FSCM and part number given, if no NSN is available.

NOTE: Cannibalization or controlled exchange, when authorized, may be used as a source of supply for items with the above source codes, except for those source coded "XA" or those aircraft support items restricted by requirements of AR 700-42.

(2) Maintenance Code. Maintenance codes tells you the level(s) of maintenance authorized to USE and REPAIR support items. The maintenance codes are entered in the third and fourth positions of the SMR Code as follows:

(a) The maintenance code entered in the third position tells you the lowest maintenance level authorized to remove, replace, and use an item. The maintenance code entered in the third position will indicate authorization to one of the following levels of maintenance.

Code	Application/Explanation
C	-Crew or operator maintenance done within organizational or aviation unit maintenance.
O	-Organizational or aviation unit category can remove, replace, and use the item.
F	-Direct support or aviation intermediate level can remove, replace, and use the item.
H	-General support level can remove, replace, and use the item.
L	-Specialized repair activity can remove, replace, and use the item.
D	-Depot level can remove, replace, and use the item.

(b) The maintenance code entered in the fourth position tells whether or not the item is to be repaired and identifies the lowest maintenance level with the capability to do complete repair (i.e., perform all authorized repair functions). (NOTE: Some limited repair may be done on the item at a lower level of maintenance, if authorized by the Maintenance Allocation Chart (MAC) and SMR codes.) This position will contain one of the following maintenance codes.

Code	Application/Explanation
O	-Organizational or (aviation unit) is the lowest level that can do complete repair of the item.
F	-Direct support or aviation intermediate is the lowest level that can do complete repair of the item.
H	-General support is the lowest level that can do complete repair of the item.

Code	Application/Explanation
L	-Specialized repair activity (designate the specialized repair activity) is the lowest level that can do complete repair of the item.
D	-Depot is the lowest level that can do complete repair of the item.
Z	-Nonreparable. No repair is authorized.
B	-No repair is authorized. (No parts or special tools are authorized for the maintenance of a "B" coded item). However, the item may be reconditioned by adjusting, lubricating, etc., at the user level.

(3) Recoverability Code. Recoverability codes are assigned to items to indicate the disposition action on unserviceable items. The recoverability code is entered in the fifth position of the SMR Code as follows:

Recoverability Codes	Application/Explanation
Z	-Nonreparable item. When unserviceable, condemn and dispose of the item at the level of maintenance shown in 3d position of SMR Code.
O	-Reparable item. When uneconomically repairable, condemn and dispose of the item at organizational or aviation unit level.
F	-Reparable item. When uneconomically repairable, condemn and dispose of the item at the direct support or aviation intermediate level.
H	-Reparable item. When uneconomically repairable, condemn and dispose of the item at the general support level.
D	-Reparable item. When beyond lower level repair capability, return to depot. Condemnation and disposal of item not authorized below depot level.
L	-Reparable item. Condemnation and disposal not authorized below specialized repair activity (SRA).

Recoverability
Codes

Application/Explanat

A -Item requires special handling or condemnation procedures because of specific reasons (e.g., precious metal content, high dollar value, critical material, or hazardous material). Refer to appropriate manuals/directives for specific instructions.

c. FSCM (Column (3)). The Federal Supply Code for Manufacturer (FSCM) is a 5-digit numeric code which is used to identify the manufacturer, distributor, or Government agency, etc., that supplies the item.

d. PART NUMBER (Column (4)). Indicates the primary number used by the manufacturer (individual, company, firm, corporation, or Government activity), which controls the design and characteristics of the item by means of its engineering drawings, specifications standards, and inspection requirements to identify an item or range of items.

NOTE: When you use a NSN to requisition an item, the item you receive may have a different part number from the part ordered.

e. DESCRIPTION AND USABLE ON CODE (UOC) (Column (5)). This column includes the following following information:

(1) The Federal item name and, when required, a minimum description to identify the item.

(2) The physical security classification of the item is indicated by the parenthetical entry (insert applicable physical security classification abbreviation, e.g., Phy Sec Cl (C) -Confidential, Phy Sec Cl (S) -Secret, Phy Sec Cl (T) -Top Secret).

(3) Items that are included in kits and sets are listed below the name of the kit or set.

(4) Spare/repair parts that make up an assembled item are listed immediately following the assembled item line entry.

(5) Part numbers for bulk materials are referenced in this column in the line item entry for the item to be manufactured/fabricated .

(6) When the item is not used with all serial numbers of the same model, the effective serial numbers are shown on the last line(s) of the description (before UOC).

(7) The usable on code, when applicable (see paragraph C-5, Special information).

(8) In the Special Tools List section, the basis of issue (BOI) appears as the last line(s) in the entry for each special tool, special TMDE, and other special support equipment. When density of issue, the total authorization is increased proportionately.

(9) The statement "END OF FIGURE" appears just below the last item description in Column 5 for a given figure in both Section II and Section III.

f. QTY (Column (6)). The QTY (quantity per figure column) indicates the quantity of the item used in the breakdown shown on the illustration figure, which is prepared for a functional group, subfunctional group, or an assembly. A "V" appearing in this column in lieu of a quantity indicates that the quantity is variable and the quantity may vary from application to application.

4. Explanation of Columns (Sect. IV).

a. NATIONAL STOCK NUMBER (NSN) INDEX.

(1) STOCK NUMBER column. This column lists the NSN by National item identification number (NIIN) sequence. The NIIN consists of the last nine digits of the NSN (i.e., $\overbrace{5305-01-674-1467}^{\text{NSN}}$). When using this column to locate an item, ignore the first 4 digits of the NSN. However, the complete NSN should be used when ordering items by stock number.

(2) FIG. column. This column lists the number of the figure where the item is identified/located. The figures are in numerical order in Section II and Section III.

(3) ITEM column. The item number identifies the item associated with the figure listed in the adjacent FIG. column. This item is also identified by the NSN listed on the same line.

b. PART NUMBER INDEX. Part numbers in this index are listed by part number in ascending alphanumeric sequence (i.e., vertical arrangement of letter and number combination which places the first letter or digit of each group in order A through Z, followed by the numbers 0 through 9 and each following letter or digit in like order).

(1) FSCM column. The Federal Supply Code for Manufacturer (FSCM) is a 5-digit numeric code used to identify the manufacturer, distributor, or Government agency, etc., that supplies the item.

(2) PART NUMBER column. Indicates the primary number used by the manufacturer (individual, firm, corporation, or Government activity), which controls the design and characteristics of the item by means of its engineering drawings, specifications standards, and inspection requirements to identify an item or range of items.

(3) STOCK NUMBER column. This column lists the NSN for the associated part number and manufacturer identified in the PART NUMBER and FSCM columns to the left.

(4) FIG. column. This column lists the number of the figure where the item is identified/located in Section II and III.

(5) ITEM column. The item number is that number assigned to the item as it appears in the figure referenced in the adjacent figure number column.

5. Special Information. Use the following subparagraphs as applicable:

a. USABLE ON CODE. The usable on code appears in the lower left corner of the Description column heading. Usable on codes are shown as "UOC:" in the Description Column (justified left) on the first line applicable item description/nomenclature. Uncoded items are applicable to all models. Identification of the usable on codes used in the RPSTL are:

NOT APPLICABLE

b. INDEX NUMBERS. Items which have the word BULK in the figure column will have an index number shown in the item number column. This index number is a cross-reference between the National Stock Number/Part Number Index and the bulk material list in Section II.

c. ASSOCIATED PUBLICATIONS. The publication(s) listed below pertain to and its components:

<u>Publication</u>	<u>Short Title</u>
N/A	N/A

NOTE: Associated publications shall not be listed here in combined narrative and RPSTL manuals.

6. How to Locate Repair Parts

a. When National Stock Number or Part Number is Not Known.

(1) First. Using the table of contents, determine the assembly group or subassembly group to which the item belongs. This is necessary since figures are prepared for assembly groups and subassembly groups, and listings are divided into the same groups.

(2) Second. Find the figure covering the assembly group or subassembly group to which the item belongs.

(3) Third. Identify the item on the figure and note the item number.

(4) Fourth. Refer to the Repair Parts List for the figure to find the part number for the item number noted on the figure.

(5) Fifth. Refer to the Part Number Index to find the NSN, if assigned.

b. When National Stock Number or Part Number is Known:

(1) First. Using the Index of National Stock Numbers and Part Numbers, find the pertinent National Stock Number or Part Number. The NSN index is in National Item Identification Number (NIIN) sequence (see 4 a (1)). The part numbers in the Part Number index are listed in ascending alphanumeric sequence (see 4 b.). Both indexes cross-reference you to the illustration figure and item number of the item you are looking for.

(2) Second. After finding the figure and item number, verify that the item is the one you're looking for, then locate the item number in the repair parts list for the figure.

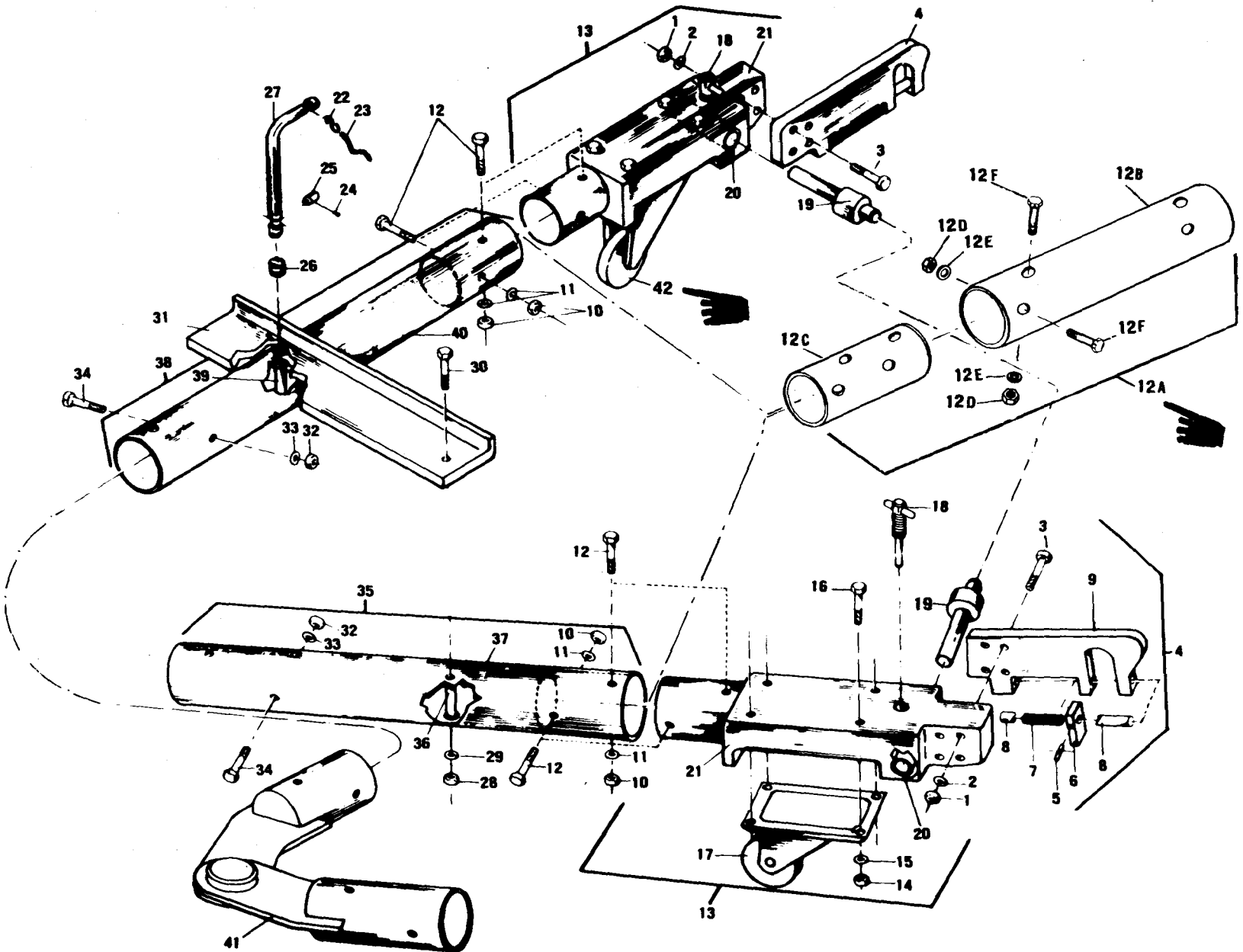


Figure 1. Tow Bar Assembly, Aircraft

(1) ITEM NO	(2) SMR CODE	(3) FSCM	(4) PART NUMBER	(5) DESCRIPTION AND USABLE ON CODE (UOC)	(6) QTY
GROUP 01. TOWBAR ASSY					
FIGURE 1. TOWBAR ASSEMBLY, AIRCRAFT					
1	PBOZZ	96906	MS21046C6	NUT, SELF-LOCKING, HE	4
2	PBOZZ	88044	AN960-616	WASHER, FLAT	4
3	PBOZZ	88044	AN6-27A	BOLT, MACHINE	4
4	PAOZZ	81996	AA1730-1251-93	HOOK ASSY	2
5	XDOZZ	96906	MS171535	.PIN, SPRING	1
6	XAOZZ	81996	AA1730-1251-21	.HANDLE	1
7	XDOZZ	81996	AA1730-1251-23	.SPRING	1
8	XDOZZ	81996	AA1730-1251-43	.PIN, RETRACTOR	1
9	PAOZZ	81996	AA1730-1251-9	.HOOK, TOW BAR, AIRCRA	1
10	PAOZZ	96906	MS21046C8	NUT, SELF-LOCKING, HE	4
11	PAOZZ	88044	AN960-816	WASHER, FLAT	4
12	PAOZZ	88044	AN8-36A	BOLT, MACHINE	4
12A	PAOZZ	81996	1730-EG-027	EXTENSION, TOWBAR	2
12B	PAOZZ	81996	1730-EG-027-1	.TUBE, METALLIC	2
12C	PAOZZ	81996	1730-EG-027-2	.TUBE, METALLIC	2
12D	PAOZZ	96906	MS21046C8	.NUT, SELF-LOCKING, HE	4
12E	PAOZZ	88044	AN960-816	.WASHER, FLAT	4
12F	PAOZZ	88044	AN8-36A	.BOLT, MACHINE	4
13	PBOZZ	81996	AA1730-1251-785	HOUSING	2
14	PBOZZ	96906	MS21046C5	.NUT, SELF-LOCKING, HE	4
15	PBOZZ	88044	AN960-516	.WASHER, FLAT	4
16	PBOZZ	88044	AN5-22A	.BOLT, MACHINE	4
17	PAOZZ	06004	4689-1	.CASTER, SWIVEL	1
18	PBOZZ	81996	AA1730-1251-48	.LOCKSCREW ASSY	1
19	PBOZZ	81996	AA1730-1251-11	.PIN, SHOULDER, HEADLE	1
20	PBOZZ	80020	NAF1066-16-252	.BUSHING, SLEEVE	1
21	XAOZZ	81996	AA1430-1251-78	.HOUSING	1
22	PBOZZ	96906	MS87006-43	HOOK, CHAIN, S	2
23	PAOZZ	81348	RRC271	CHAIN, WELDLESS	1
24	PBOZZ	96906	MS20426AD4-9	RIVET, SOLID	1
25	XDFZZ	81996	AA1730-1251-35	STOP	1
26	XDOZZ	81996	AA1730-1251-33	SPRING, HELICAL, COMP	1
27	PAOZZ	81996	AA1730-1251-27	RELEASER	1
28	PBOZZ	88044	AN310-8	NUT, PLAIN, CASTEL	1
29	PBOZZ	88044	AN960-816	WASHER, FLAT	1
30	PBOZZ	88044	AN8-40A	BOLT, MACHINE	1
31	PAOZZ	81996	AA1730-1251-41	ANGLE	1
32	PBOZZ	96906	MS21046C8	NUT, SELF-LOCKING, HE	4
33	PBOZZ	88044	AN960-816	WASHER, FLAT	4
34	PBOZZ	88044	AN8-36A	BOLT, MACHINE	4
35	XDOOO	81996	AA1730-1251-515	TUBE ASSEMBLY, LH	1
36	XDOZZ	81996	AA1730-1251-15	.GUIDE, TUBE	1
37	XAOZZ	81996	AA1730-1251-5	.TUBE, METALLIC	1
38	MFOZZ	81996	AA1730-1251-615	TUBE, LEFT HAND	1
39	XDOZZ	81996	AA1730-1251-15	.GUIDE, TUBE	1
40	XAOZZ	81996	AA1730-1251-6	.TUBE, METALLIC	1
41	XDOFZ	81996	AA1730-1251-87	LUNETTE ASSEMBLY	1
42	PAOZZ	06004	4089-1	CASTER, RIGID	1

END OF FIGURE

CROSS-REFERENCE INDEXES

NATIONAL STOCK NUMBER INDEX

STOCK NUMBER	FIG	ITEM	STOCK NUMBER	FIG	ITEM
5310-00-059-9266	1	14			
5306-00-151-2621	1	16			
5310-00-167-0820	1	15			
5310-00-167-0821	1	2			
5310-00-167-0823	1	11			
	1	12E			
	1	29			
	1	33			
5310-00-167-1289	1	28			
5306-00-180-0307	1	3			
5340-00-205-5628	1	17			
5306-00-208-3649	1	12			
	1	12F			
	1	34			
4010-00-530-2050	1	23			
5320-00-619-4093	1	24			
5306-00-720-7818	1	30			
4030-00-954-8801	1	22			
5310-00-982-4971	1	1			
5310-00-982-4975	1	10			
	1	12D			
	1	32			
1730-01-016-3568	1	9			
3120-01-017-5921	1	20			
5315-01-021-0056	1	19			
1730-01-087-4228	1	27			
1730-01-087-4229	1	18			
1730-01-087-4230	1	4			
1730-01-111-4305	1	13			
1730-01-159-7991	1	31			
1730-01-260-6255	1	12A			
5340-01-260-6258	1	42			
4710-01-260-6260	1	12B			
4710-01-260-6261	1	12C			

PART NUMBER INDEX

FSCM	PART NUMBER	STOCK NUMBER	FIG	ITEM
81996	AA1730-1251-11	5315-01-021-0056	1	19
81996	AA1730-1251-15		1	36
			1	39
81996	AA1730-1251-21		1	6
81996	AA1730-1251-23		1	7
81996	AA1730-1251-27	1730-01-087-4228	1	27
81996	AA1730-1251-33		1	26
81996	AA1730-1251-35		1	25
81996	AA1730-1251-41	1730-01-159-7991	1	31
81996	AA1730-1251-43		1	8
81996	AA1730-1251-48	1730-01-087-4229	1	18
81996	AA1730-1251-5		1	37
81996	AA1730-1251-515		1	35
81996	AA1730-1251-6		1	40
81996	AA1730-1251-615		1	38
81996	AA1730-1251-78		1	21
81996	AA1730-1251-785	1730-01-111-4305	1	13
81996	AA1730-1251-87		1	41
81996	AA1730-1251-9	1730-01-016-3568	1	9
81996	AA1730-1251-93	1730-01-087-4230	1	4
88044	AN310-8	5310-00-167-1289	1	28
88044	AN5-22A	5306-00-151-2621	1	16
88044	AN6-27A	5306-00-180-0307	1	3
88044	AN8-36A	5306-00-208-3649	1	12
			1	12F
			1	34
88044	AN8-40A	5306-00-720-7818	1	30
88044	AN960-516	5310-00-167-0820	1	15
88044	AN960-616	5310-00-167-0821	1	2
88044	AN960-816	5310-00-167-0823	1	11
			1	12E
			1	29
			1	33
96906	MS171535		1	5
96906	MS20426AD4-9	5320-00-619-4093	1	24
96906	MS21046C5	5310-00-059-9266	1	14
96906	MS21046C6	5310-00-982-4971	1	1
96906	MS21046C8	5310-00-982-4975	1	10
			1	12D
			1	32
96906	MS87006-43	4030-00-954-8801	1	22
80020	NAF1066-16-252	3120-01-017-5921	1	20
81348	RRC271	4010-00-530-2050	1	23
81996	1730-EG-027	1730-01-260-6255	1	12A
81996	1730-EG-027-1	4710-01-260-6260	1	12B
81996	1730-EG-027-2	4710-01-260-6261	1	12C
06004	4089-1	5340-01-260-6258	1	42
06004	4689-1	5340-00-205-5628	1	17

FIG	ITEM	FIGURE AND ITEM NUMBER STOCK NUMBER	INDEX FSCM	PART NUMBER
1	1	5310-00-982-4971	96906	MS21046C6
1	2	5310-00-167-0821	88044	AN960-616
1	3	5306-00-180-0307	88044	AN6-27A
1	4	1730-01-087-4230	81996	AA1730-1251-93
1	5		96906	MS171535
1	6		81996	AA1730-1251-21
1	7		81996	AA1730-1251-23
1	8		81996	AA1730-1251-43
1	9	1730-01-016-3568	81996	AA1730-1251-9
1	10	5310-00-982-4975	96906	MS21046C8
1	11	5310-00-167-0823	88044	AN960-816
1	12	5306-00-208-3649	88044	AN8-36A
1	12A	1730-01-260-6255	81996	1730-EG-027
1	12B	4710-01-260-6260	81996	1730-EG-027-1
1	12C	4710-01-260-6261	81996	1730-EG-027-2
1	12D	5310-00-982-4975	96906	MS21046C8
1	12E	5310-00-167-0823	88044	AN960-816
1	12F	5306-00-208-3649	88044	AN8-36A
1	13	1730-01-111-4305	81996	AA1730-1251-785
1	14	5310-00-059-9266	96906	MS21046C5
1	15	5310-00-167-0820	88044	AN960-516
1	16	5306-00-151-2621	88044	AN5-22A
1	17	5340-00-205-5628	06004	4689-1
1	18	1730-01-087-4229	81996	AA1730-1251-48
1	19	5315-01-021-0056	81996	AA1730-1251-11
1	20	3120-01-017-5921	80020	NAF1066-16-252
1	21		81996	AA1730-1251-78
1	22	4030-00-954-8801	96906	MS87006-43
1	23	4010-00-530-2050	81348	RRC271
1	24	5320-00-619-4093	96906	MS20426AD4-9
1	25		81996	AA1730-1251-35
1	26		81996	AA1730-1251-33
1	27	1730-01-087-4228	81996	AA1730-1251-27
1	28	5310-00-167-1289	88044	AN310-8
1	29	5310-00-167-0823	88044	AN960-816
1	30	5306-00-720-7818	88044	AN8-40A
1	31	1730-01-159-7991	81996	AA1730-1251-41
1	32	5310-00-982-4975	96906	MS21046C8
1	33	5310-00-167-0823	88044	AN960-816
1	34	5306-00-208-3649	88044	AN8-36A
1	35		81996	AA1730-1251-515
1	36		81996	AA1730-1251-15
1	37		81996	AA1730-1251-5
1	38		81996	AA1730-1251-615
1	39		81996	AA1730-1251-15
1	40		81996	AA1730-1251-6
1	41		81996	AA1730-1251-87
1	42	5340-01-260-6258	06004	4089-1

By Order of the Secretary of the Army:

Official:

E. C. MEYER
General, United States Army
Chief of Staff

J. C. PENNINGTON
Major General, United States Army
The Adjutant General

DISTRIBUTION:

To be distributed in accordance with DA Form 12-31 Organizational Maintenance Requirements for All Fixed and Rotor Wing Aircraft.



THEN... JOT DOWN THE DOPE ABOUT IT ON THIS FORM. CAREFULLY TEAR IT OUT. FOLD IT AND DROP IT IN THE MAIL!

SOMETHING WRONG WITH THIS PUBLICATION?

FROM: (PRINT YOUR UNIT'S COMPLETE ADDRESS)

PFC JOHN DOE
COA, 3d ENGINEER BN
FT. LEONARDWOOD, MO 63108

DATE SENT

PUBLICATION NUMBER

TM 55-1730-225-23P

PUBLICATION DATE

25 Nov 1986

Tow Bar Assembly, Aircraft P/N

AA1730-1251, NSN 1730-00-967-9556

BE EXACT PIN-POINT WHERE IT IS

PAGE NO	PARA-GRAPH	FIGURE NO	TABLE NO
6	2-1 a		
B1		4-3	
125	line 20		

IN THIS SPACE TELL WHAT IS WRONG AND WHAT SHOULD BE DONE ABOUT IT:

In line 6 of paragraph 2-1a the manual states the engine has 6 cylinders. The engine on my set only has 4 cylinders. Change the manual to show 4 cylinders.

Callout 16 on figure 4-3 is pointing at a bolt. In key to figure 4-3, item 16 is called a shim - Please correct one or the other.

I ordered a gasket, item 19 on figure B-16 by NSN 2 910-00-762-3001. I got a gasket but it doesn't fit. Supply says I got what I ordered, so the NSN is wrong. Please give me a good NSN

PRINTED NAME, GRADE OR TITLE AND TELEPHONE NUMBER

JOHN DOE, PFC (268) 317-7111

SIGN HERE

JOHN DOE

TEAR ALONG PERFORATED LINE

FILL IN YOUR
UNIT'S ADDRESS



FOLD BACK

DEPARTMENT OF THE ARMY

TEAR ALONG PERFORATED LINE

COMMANDER
U S ARMY AVIATION SYSTEMS COMMAND
ATTN: AMSAV-MPSD
4300 GOODFELLOW BOULEVARD
ST. LOUIS, MO 63120-1798

RECOMMENDED CHANGES TO EQUIPMENT TECHNICAL PUBLICATIONS



THEN... JOT DOWN THE DOPE ABOUT IT ON THIS FORM, CAREFULLY TEAR IT OUT, FOLD IT AND DROP IT IN THE MAIL!

SOMETHING WRONG WITH THIS PUBLICATION?

FROM: (PRINT YOUR UNIT'S COMPLETE ADDRESS)

DATE SENT

PUBLICATION NUMBER

TM 55-1730-225-23P

PUBLICATION DATE

25 Nov 1986

Tow Bar Assembly, Aircraft P/N

AA1730-1251, NSN 1730-00-967-9556

BE EXACT... PIN-POINT WHERE IT IS

PAGE NO

PARA-GRAPH

FIGURE NO

TABLE NO

IN THIS SPACE TELL WHAT IS WRONG AND WHAT SHOULD BE DONE ABOUT IT:

TEAR ALONG PERFORATED LINE

PRINTED NAME, GRADE OR TITLE, AND TELEPHONE NUMBER

SIGN HERE

DA FORM 2028-2
1 JUL 79

PREVIOUS EDITIONS ARE OBSOLETE.
DRSTS-M Overprint 2, 1 Nov 80.

P.S.--IF YOUR OUTFIT WANTS TO KNOW ABOUT YOUR RECOMMENDATION MAKE A CARBON COPY OF THIS AND GIVE IT TO YOUR HEADQUARTERS.

FILL IN YOUR
UNIT'S ADDRESS

FOLD BACK

DEPARTMENT OF THE ARMY

COMMANDER
U S ARMY AVIATION SYSTEMS COMMAND
ATTN: AMSAV-MPSD
4300 GOODFELLOW BOULEVARD
ST. LOUIS, MO 63120-1798

TEAR ALONG PERFORATED LINE

RECOMMENDED CHANGES TO EQUIPMENT TECHNICAL PUBLICATIONS



THEN... JOT DOWN THE DOPE ABOUT IT ON THIS FORM, CAREFULLY TEAR IT OUT, FOLD IT AND DROP IT IN THE MAIL!

SOMETHING WRONG WITH THIS PUBLICATION?

FROM: (PRINT YOUR UNIT'S COMPLETE ADDRESS)

DATE SENT

PUBLICATION NUMBER

TM 55-1730-225-23P

PUBLICATION DATE

25 Nov 1986

Tow Bar Assembly, Aircraft P/N

AA1730-1251, NSN 1730-00-967-9556

BE EXACT. PIN-POINT WHERE IT IS

PAGE NO

PARA-GRAPH

FIGURE NO

TABLE NO

IN THIS SPACE TELL WHAT IS WRONG AND WHAT SHOULD BE DONE ABOUT IT:

TEAR ALONG PERFORATED LINE

PRINTED NAME, GRADE OR TITLE, AND TELEPHONE NUMBER

SIGN HERE

DA FORM 2028-2
1 JUL 79

PREVIOUS EDITIONS ARE OBSOLETE.
DRSTS-M Overprint 2, 1 Nov 80.

P S --IF YOUR OUTFIT WANTS TO KNOW ABOUT YOUR RECOMMENDATION MAKE A CARBON COPY OF THIS AND GIVE IT TO YOUR HEADQUARTERS.

FILL IN YOUR
UNIT'S ADDRESS

FOLD BACK

DEPARTMENT OF THE ARMY

COMMANDER
U S ARMY AVIATION SYSTEMS COMMAND
ATTN: AMSAV-MPSD
4300 GOODFELLOW BOULEVARD
ST. LOUIS, MO 63120-1798

TEAR ALONG PERFORATED LINE

RECOMMENDED CHANGES TO EQUIPMENT TECHNICAL PUBLICATIONS



THEN... JOT DOWN THE DOPE ABOUT IT ON THIS FORM. CAREFULLY TEAR IT OUT. FOLD IT AND DROP IT IN THE MAIL!

SOMETHING WRONG WITH THIS PUBLICATION?

FROM: (PRINT YOUR UNIT'S COMPLETE ADDRESS)

DATE SENT

PUBLICATION NUMBER

TM 55-1730-225-23P

PUBLICATION DATE

25 Nov 1986

Tow Bar Assembly, Aircraft P/N
AA1730-1251, NSN 1730-00-967-9556

BE EXACT. PIN-POINT WHERE IT IS

PAGE NO	PARA-GRAPH	FIGURE NO	TABLE NO

IN THIS SPACE TELL WHAT IS WRONG AND WHAT SHOULD BE DONE ABOUT IT:

PRINTED NAME, GRADE OR TITLE, AND TELEPHONE NUMBER

SIGN HERE

DA FORM 2028-2
1 JUL 79

PREVIOUS EDITIONS ARE OBSOLETE.
DRSTS-M Overprint 2, 1 Nov 80.

P.S.--IF YOUR OUTFIT WANTS TO KNOW ABOUT YOUR RECOMMENDATION MAKE A CARBON COPY OF THIS AND GIVE IT TO YOUR HEADQUARTERS.

TEAR ALONG PERFORATED LINE

FILL IN YOUR
UNIT'S ADDRESS

FOLD BACK

DEPARTMENT OF THE ARMY

COMMANDER
U S ARMY AVIATION SYSTEMS COMMAND
ATTN: AMSAV-MPSD
4300 GOODFELLOW BOULEVARD
ST. LOUIS, MO 63120-1798

TEAR ALONG PERFORATED LINE

RECOMMENDED CHANGES TO EQUIPMENT TECHNICAL PUBLICATIONS



THEN... JOT DOWN THE DOPE ABOUT IT ON THIS FORM. CAREFULLY TEAR IT OUT. FOLD IT AND DROP IT IN THE MAIL!

SOMETHING WRONG WITH THIS PUBLICATION?

FROM: (PRINT YOUR UNIT'S COMPLETE ADDRESS)

DATE SENT

PUBLICATION NUMBER

TM 55-1730-225-23P

PUBLICATION DATE

25 Nov 1986

Tow Bar Assembly, Aircraft P/N

AA1730-1251, NSN 1730-00-967-9556

BE EXACT... PIN-POINT WHERE IT IS

PAGE NO	PARA-GRAPH	FIGURE NO	TABLE NO

IN THIS SPACE TELL WHAT IS WRONG AND WHAT SHOULD BE DONE ABOUT IT:

PRINTED NAME, GRADE OR TITLE, AND TELEPHONE NUMBER

SIGN HERE

TEAR ALONG PERFORATED LINE

FILL IN YOUR
UNIT'S ADDRESS

FOLD BACK

DEPARTMENT OF THE ARMY

TEAR ALONG PERFORATED LINE

COMMANDER
U S ARMY AVIATION SYSTEMS COMMAND
ATTN: AMSAV-MPSD
4300 GOODFELLOW BOULEVARD
ST. LOUIS, MO 63120-1798

The Metric System and Equivalents

Linear Measure

1 centimeter = 10 millimeters = .39 inch
 1 decimeter = 10 centimeters = 3.94 inches
 1 meter = 10 decimeters = 39.37 inches
 1 dekameter = 10 meters = 32.8 feet
 1 hectometer = 10 dekameters = 328.08 feet
 1 kilometer = 10 hectometers = 3,280.8 feet

Weights

1 centigram = 10 milligrams = .15 grain
 1 decigram = 10 centigrams = 1.54 grains
 1 gram = 10 decigrams = .035 ounce
 1 dekagram = 10 grams = .35 ounce
 1 hectogram = 10 dekagrams = 3.52 ounces
 1 kilogram = 10 hectograms = 2.2 pounds
 1 quintal = 100 kilograms = 220.46 pounds
 1 metric ton = 10 quintals = 1.1 short tons

Liquid Measure

1 centiliter = 10 milliliters = .34 fl. ounce
 1 deciliter = 10 centiliters = 3.38 fl. ounces
 1 liter = 10 deciliters = 38.82 fl. ounces
 1 dekaliter = 10 liters = 2.64 gallons
 1 hectoliter = 10 dekaliters = 26.42 gallons
 1 kiloliter = 10 hectoliters = 264.18 gallons

Square Measure

1 sq. centimeter = 100 sq. millimeters = .155 sq. inch
 1 sq. decimeter = 100 sq. centimeters = 15.5 sq. inches
 1 sq. meter (centare) = 100 sq. decimeters = 10.76 sq. feet
 1 sq. dekameter (are) = 100 sq. meters = 1,076.4 sq. feet
 1 sq. hectometer (hectare) = 100 sq. dekameters = 2.47 acres
 1 sq. kilometer = 100 sq. hectometers = .386 sq. mile

Cubic Measure

1 cu. centimeter = 1000 cu. millimeters = .06 cu. inch
 1 cu. decimeter = 1000 cu. centimeters = 61.02 cu. inches
 1 cu meter = 1000 cu. decimeters = 35.31 cu. feet

Approximate Conversion Factors

To change	To	Multiply by	To change	To	Multiply by
inches	centimeters	2.540	ounce-inches	newton-meters	.007062
feet	meters	.305	centimeters	inches	.394
yards	meters	.914	meters	feet	3.280
miles	kilometers	1.609	meters	yards	1.094
square inches	square centimeters	6.451	kilometers	miles	.621
square feet	square meters	.093	square centimeters	square inches	.155
square yards	square meters	.836	square meters	square feet	10.764
square miles	square kilometers	2.590	square meters	square yards	1.196
acres	square hectometers	.405	square kilometers	square miles	.386
cubic feet	cubic meters	.028	square hectometers	acres	2.471
cubic yards	cubic meters	.765	cubic meters	cubic feet	35.315
fluid ounces	milliliters	29.573	cubic meters	cubic yards	1.308
pints	liters	.473	milliliters	fluid ounces	.034
quarts	liters	.946	liters	pints	2.113
gallons	liters	3.785	liters	quarts	1.057
ounces	grams	28.349	liters	gallons	.264
pounds	kilograms	.454	grams	ounces	.035
short tons	metric tons	.907	kilograms	pounds	2.205
pound-feet	newton-meters	1.365	metric tons	short tons	1.102
pound-inches	newton-meters	.11375			

Temperature (Exact)

°F	Fahrenheit temperature	5/9 (after subtracting 32)	Celsius temperature	°C
----	------------------------	----------------------------	---------------------	----

